

# Training Project - Innovation Depot




Site Walk Report




1500 1st Avenue North  
Birmingham, AL 35203  
Nov 07 2024

# Site Plan

This is a high-level view showing existing and / or future equipment location.



-  New EV Charger
-  New Switchgear
-  Existing EV Charger

-  New Utility Transformer
-  Existing Utility Transformer
-  Electrical Room



# Project Information

## Project Overview

Directions for Technician:

Customer needs a quote to add 2 level 2 chargers. Install should be adjacent to the existing 2 chargers in the main parking lot. Take photos and videos of the area for new switchgear. Be sure to get a key from Glenda at the front desk

## Site Walk Information

Date Site Walk Completed:	Aug 02 2023
Individual Performing Site Walk:	Anne Randall
Email:	Anne@condoit.io

## Customer Information

Name/Company:	Innovation Depot
Primary Contact Person:	Emily Frontdesk
Email:	frontdesk@depot.com
Phone:	(659) 999-9999



## Site Information

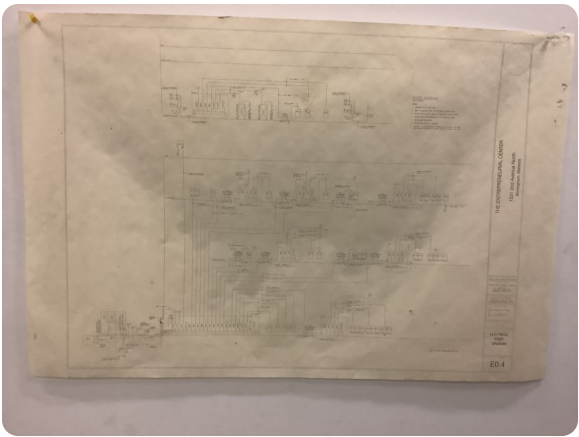
Site Use:	Commercial - Retail
Parking Type:	Surface Lot
Distance From Electrical Room to Charger Site (feet):	100

## Charger Use

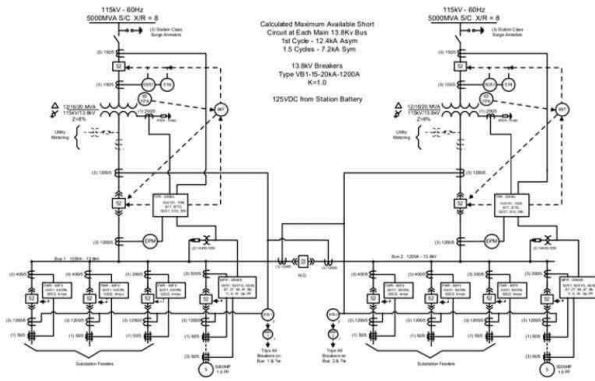
Will chargers be available to the public?:	Yes
Are there existing chargers on site?:	Yes

## As-Built Electrical Plans

Are there existing electrical plans? Verify with owner:	Yes
---------------------------------------------------------	-----



## Existing Site Plans



## Site Narrative

General  
Notes:

New utility connection and switchgear should be installed on the north side of building on 2nd Ave North. 2 existing chargers.



## 0





# Site Photos & Videos

## Electrical Room



## New Utility Transformer





## New Switchgear Location



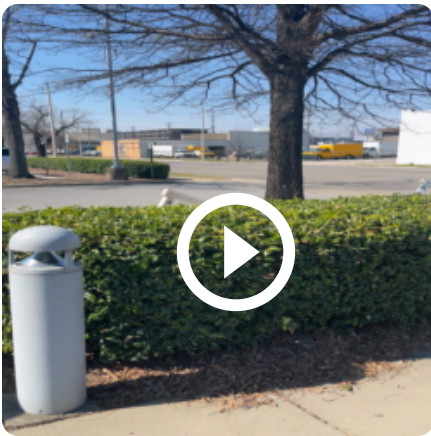
## Proposed Charger Location







## Conduit Run to Charger



View video in Conduit project [↗](#)

# Equipment

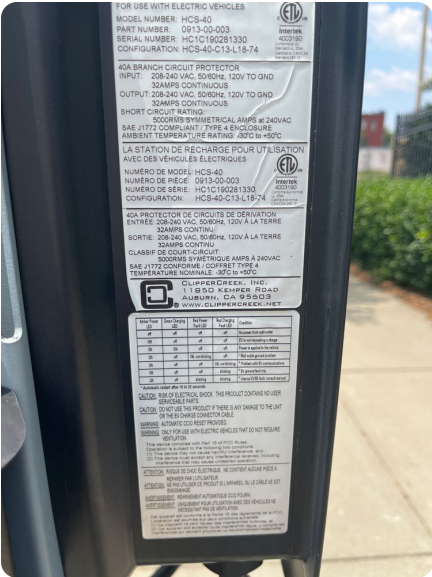
## Automatic Transfer Switch - ATS LS

Location Description:	Electrical Room 2
Voltage:	480V Delta
Phase/Wire:	3phase-4wire

## EV Charger - Charger Photos

Location:	Main Parking Lot
Amperage Rating:	10
Level:	2
Manufacturer:	EnviroSpark
Number of Ports:	2





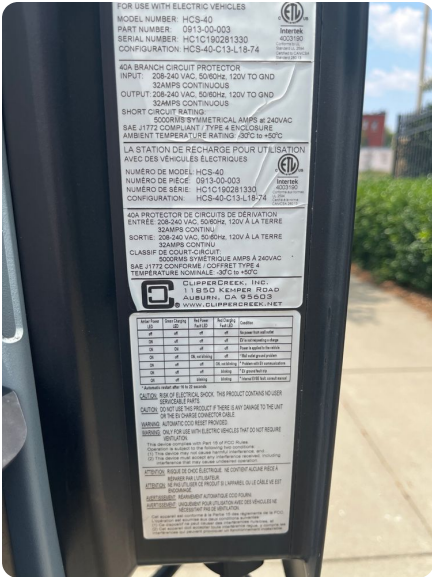
## EV Charger - Charger

Location:	Main Parking Lot
Amperage Rating:	10
Level:	2
Manufacturer:	EnviroSpark
Number of Ports:	2

## EV Charger - Charger

Amperage Rating:	40
Level:	2
Manufacturer:	EnviroSpark
Number of Ports:	2





# Generator - Gen 1

Location:	<a href="#">Loading doc</a>
KVA Rating:	50
Voltage:	480V Delta
Phase/Wire:	3phase-4wire





## Generator - Main Gen

KVA Rating:	100
Voltage:	277/480V
Phase/Wire:	1phase-3wire

## Generic Load - Hot Tub

Voltage:	480V Delta
Phase/Wire:	3phase-4wire
Amperage Rating:	40

## Generic Load - Outside AC Condenssor

Voltage:	120/208V Y
Phase/Wire:	3phase-4wire
Amperage Rating:	30

## Motor - ABK6-FLP

Location:	Loading Dock
Amperage Rating:	20



## Panel - Pp1

Location:	Electricl room
Voltage:	277/480V
Phase/Wire:	1phase-3wire
Meter attached?:	false
Left Breaker Spaces:	0
Main type (MLO, MBO, etc):	Main Breaker
Right Breaker Spaces:	0

## Panel - Rp1d

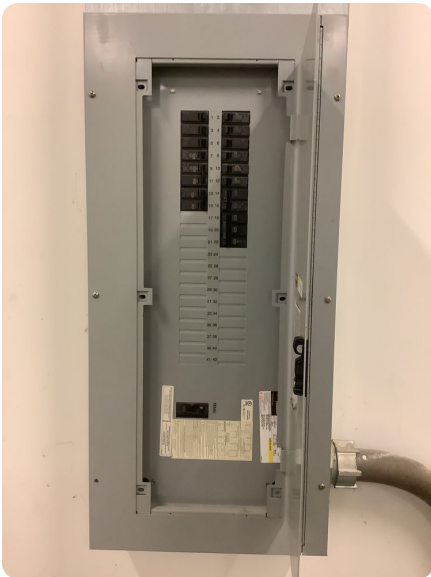
Location:	Electrical room
Voltage:	120/208V Y
Phase/Wire:	3phase-4wire
Meter attached?:	false
Left Breaker Spaces:	0
Main type (MLO, MBO, etc):	Main Breaker
Measured load: A-Phase:	0
Measured load: B-Phase:	0
Measured load: C-Phase:	0
Right Breaker Spaces:	0



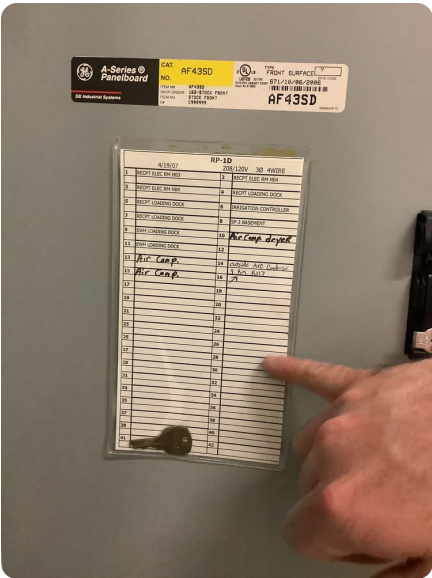
Front (Closed)



Front (Open)



Panel Schedule



Panel - Panel A

Location:	Electricl room
Voltage:	277/480V Y
Phase/Wire:	3phase-4wire
Meter attached?:	false
Left Breaker Spaces:	0
Main type (MLO, MBO, etc):	Main Breaker
Measured load: A-Phase:	10
Measured load: B-Phase:	10
Measured load: C-Phase:	10
Right Breaker Spaces:	0





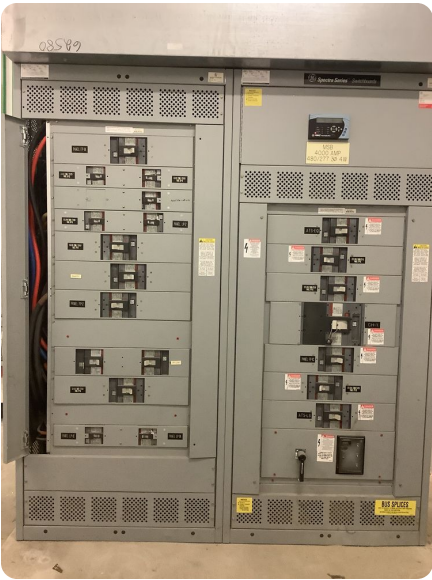
# Switchboard - FP EM LS - Floor 1

Location:	Electrical Room - Floor 1
Voltage:	277/480V Y
Phase/Wire:	3phase-4wire
Measured load: A-Phase:	10
Measured load: B-Phase:	10
Measured load: C-Phase:	10



# Switchboard - Main Switchbaord

Location:	Electrical Room
Voltage:	277/480V Y
Phase/Wire:	3phase-4wire
Measured load: A-Phase:	0
Measured load: B-Phase:	0
Measured load: C-Phase:	0





# Switchboard - Main Breaker

Location:	Loading dock
Voltage:	277/480V Y
Phase/Wire:	3phase-4wire
Measured load: A-Phase:	0
Measured load: B-Phase:	0
Measured load: C-Phase:	0





## Switchboard - FP EM LS - Floor 2

Location:	Electrical Room - Floor 1
Voltage:	480V Delta
Phase/Wire:	3phase-4wire
Measured load: A-Phase:	10
Measured load: B-Phase:	10
Measured load: C-Phase:	10





# Transformer - TX 1D

Location Description:	Electrical room
Kva Rating:	50
Primary Phase/Wire:	3phase-4wire
Primary Voltage:	480V Delta
Secondary Phase/Wire:	3phase-4wire
Secondary Voltage:	120/208V Y



# Utility Transformer - Alabama Power

Location:	2nd Ave North loading dock
Utility ID:	88-51693
kVA Rating:	1000
Voltage:	277/480V Y
Phase/Wire:	3phase-4wire
Service Provider:	Alabama Power





# EV Charger - New Charger

Amperage Rating:	10
Level:	2
Manufacturer:	BTCPower
Number of Ports:	2

