

Training Project - Innovation Depot

Equipment

1500 1st Avenue North
Birmingham, AL 35203

Nov 07 2024

Equipment

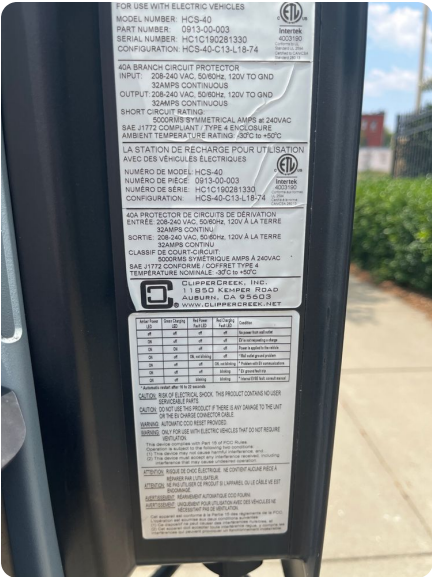
Automatic Transfer Switch - ATS LS

Location Description:	Electrical Room 2
Voltage:	480V Delta
Phase/Wire:	3phase-4wire

EV Charger - Charger Photos

Location:	Main Parking Lot
Amperage Rating:	10
Level:	2
Manufacturer:	EnviroSpark
Number of Ports:	2





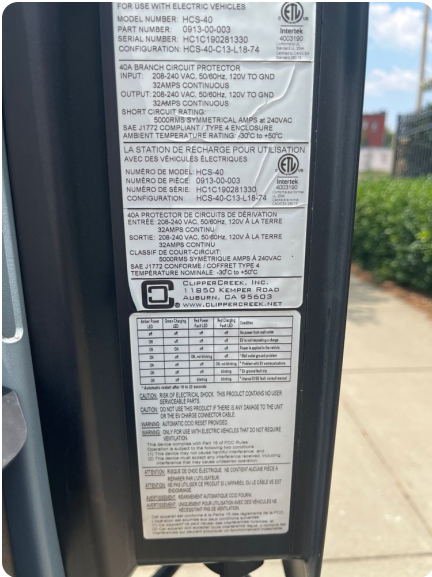
EV Charger - Charger

Location:	Main Parking Lot
Amperage Rating:	10
Level:	2
Manufacturer:	EnviroSpark
Number of Ports:	2

EV Charger - Charger

Amperage Rating:	40
Level:	2
Manufacturer:	EnviroSpark
Number of Ports:	2





Generator - Gen 1

Location:	Loading doc
KVA Rating:	50
Voltage:	480V Delta
Phase/Wire:	3phase-4wire



Generator - Main Gen

KVA Rating:	100
Voltage:	277/480V
Phase/Wire:	1phase-3wire

Generic Load - Hot Tub

Voltage:	480V Delta
Phase/Wire:	3phase-4wire
Amperage Rating:	40

Generic Load - Outside AC Condenssor

Voltage:	120/208V Y
Phase/Wire:	3phase-4wire
Amperage Rating:	30

Motor - ABK6-FLP

Location:	Loading Dock
Amperage Rating:	20



Panel - Pp1

Location:	Electricl room
Voltage:	277/480V
Phase/Wire:	1phase-3wire
Meter attached?:	false
Left Breaker Spaces:	0
Main type (MLO, MBO, etc):	Main Breaker
Right Breaker Spaces:	0

Panel - Rp1d

Location:	Electrical room
Voltage:	120/208V Y
Phase/Wire:	3phase-4wire
Meter attached?:	false
Left Breaker Spaces:	0
Main type (MLO, MBO, etc):	Main Breaker
Measured load: A-Phase:	0
Measured load: B-Phase:	0
Measured load: C-Phase:	0
Right Breaker Spaces:	0



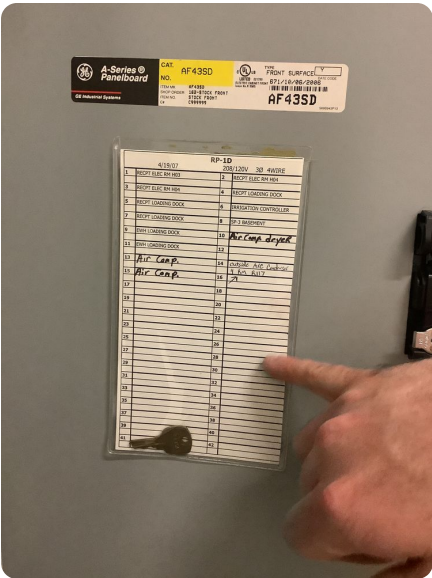
Front (Closed)



Front (Open)



Panel Schedule



Panel - Panel A

Location:	Electricl room
Voltage:	277/480V Y
Phase/Wire:	3phase-4wire
Meter attached?:	false
Left Breaker Spaces:	0
Main type (MLO, MBO, etc):	Main Breaker
Measured load: A-Phase:	10
Measured load: B-Phase:	10
Measured load: C-Phase:	10
Right Breaker Spaces:	0



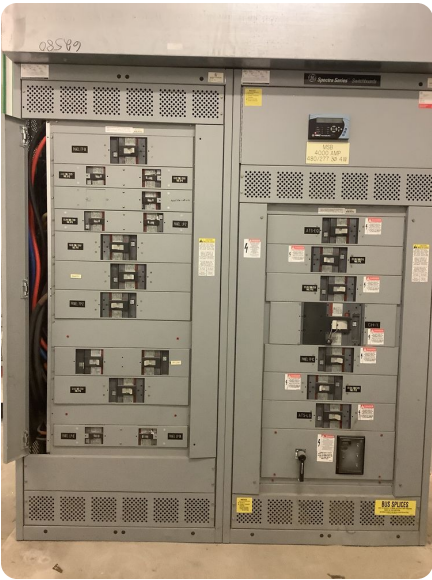
Switchboard - FP EM LS - Floor 1

Location:	Electrical Room - Floor 1
Voltage:	277/480V Y
Phase/Wire:	3phase-4wire
Measured load: A-Phase:	10
Measured load: B-Phase:	10
Measured load: C-Phase:	10



Switchboard - Main Switchbaord

Location:	Electrical Room
Voltage:	277/480V Y
Phase/Wire:	3phase-4wire
Measured load: A-Phase:	0
Measured load: B-Phase:	0
Measured load: C-Phase:	0





Switchboard - Main Breaker

Location:	Loading dock
Voltage:	277/480V Y
Phase/Wire:	3phase-4wire
Measured load: A-Phase:	0
Measured load: B-Phase:	0
Measured load: C-Phase:	0





Switchboard - FP EM LS - Floor 2

Location:	Electrical Room - Floor 1
Voltage:	480V Delta
Phase/Wire:	3phase-4wire
Measured load: A-Phase:	10
Measured load: B-Phase:	10
Measured load: C-Phase:	10



Transformer - TX 1D

Location Description:	Electrical room
Kva Rating:	50
Primary Phase/Wire:	3phase-4wire
Primary Voltage:	480V Delta
Secondary Phase/Wire:	3phase-4wire
Secondary Voltage:	120/208V Y



Utility Transformer - Alabama Power

Location:	2nd Ave North loading dock
Utility ID:	88-51693
kVA Rating:	1000
Voltage:	277/480V Y
Phase/Wire:	3phase-4wire
Service Provider:	Alabama Power





EV Charger - New Charger

Amperage Rating:	10
Level:	2
Manufacturer:	BTCPower
Number of Ports:	2

